

İBRAHİMPAŞA AND ORTAHİSAR WASTEWATER AND GARBAGE PROBLEMS

Ibrahimpasa wastewater and garbage dump problems

By Paul Broekman - inhabitant of Ibrahimpasa

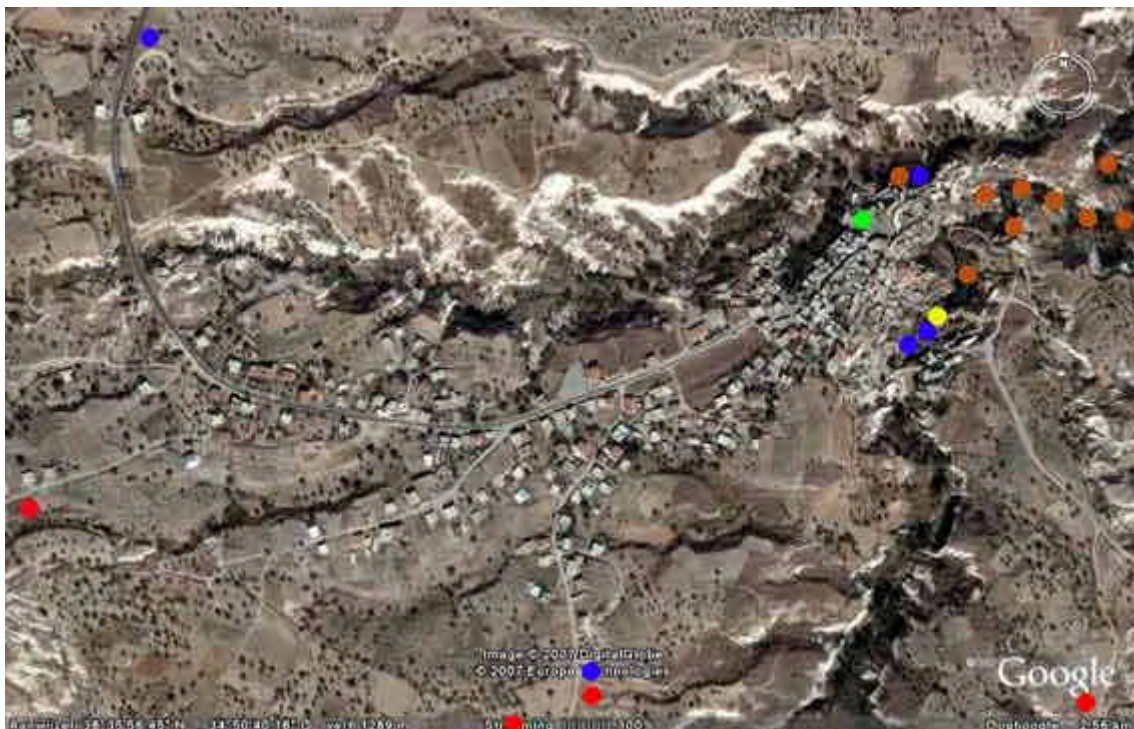
The wastewater and garbage problems in Ibrahimpasa are divided in five separate elements.

1. The wastewater
2. The officially garbage dump places
3. The illegal dump places
4. The garbage dump places from individual households
5. Butcher/Slaughter garbage

Another element, which should be considered as an environmental problem is the destruction of the cultural in heritage in the region.

The following map shows some of the places where the first four problems occurs in the village of Ibrahimpasa While walking in the village of Ibrahimpasa and her the surroundings I found a lot more places where garbage and litter is dumped. I have seen places where furniture was dumped, construction garbage, unrecognizable parties of plastics, and so on. One of the consequences of the garbage dump places is that the litter is spread around by wind in the surrounding of those places.

Therefore garbage dump and wastewater streams are limited indicated on this 'Google Earth' map.



- The red dot marks the official garbage dump places
- The blue dot marks household and illegal garbage dump of all kind
- The yellow dot mark the Butcher/Slaughter garbage
- The brown dot marks the wastewater stream
- The green dot marks the place of the garbage tractor in the center of the old village



● Garbage dump place



● Garbage dump place



● Illegal garbage dump of households



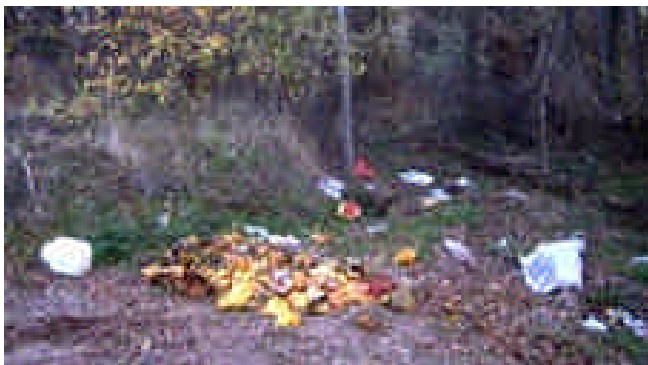
● Illegal garbage dump of households



● Illegal dump of construction garbage



● Illegal garbage dump of households



● Illegal garbage dump



● Illegal garbage dump (metal)



● Wandering garbage near a garbage dump

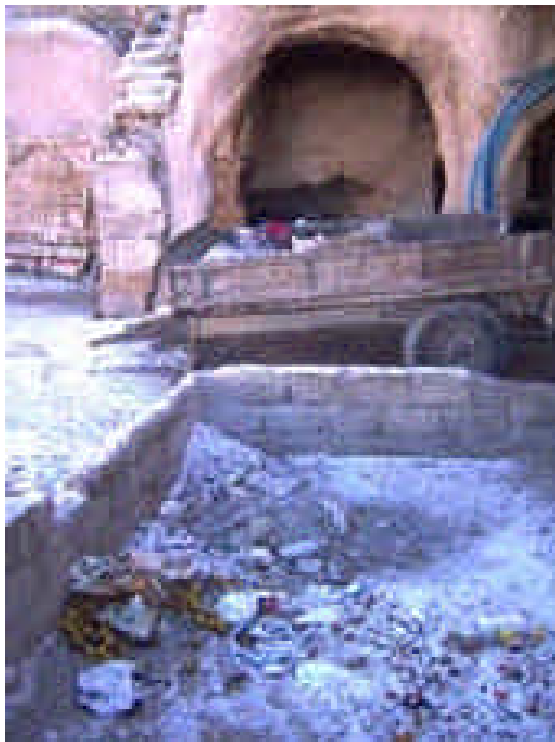




● Butcher garbage in the valley



● Butcher garbage in the road



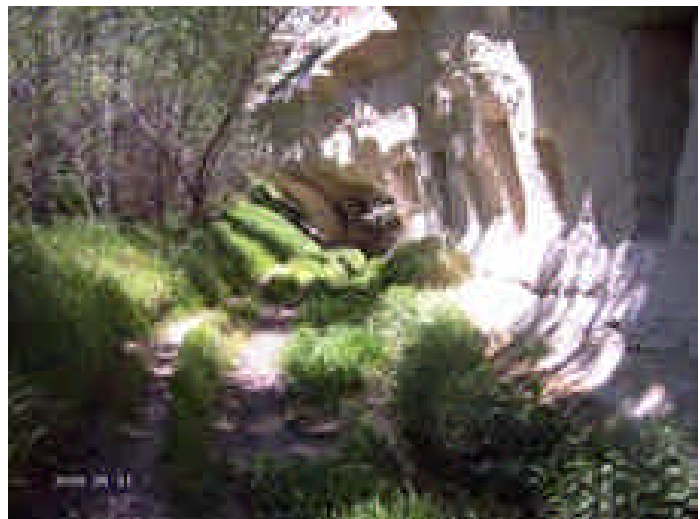
● The garbage collecting place next to the square in the center of old Ibrahimpasa.



● Wastewater coming out of a tube falling in the valley



● The wastewater runs into a small pond



● The wastewater runs through the valley ● Wastewater goes through a tunnel into the valley



People of the villages in Cappadocia think that there are treasures to be found in the old (protected?!) churches. Therefore they dig and molest those churches in all kind of ways.

Ice rains of wastewater falling in the valleys of Ibrahimpasa in winter 2008:



The garbage problems in Ortahisar

By Evelien Bogaart, inhabitant of Ortahisar



Since 2,5 years I'm living happily in the village of Ortahisar in the region of Cappadocia. It's wonderful to live in such a beautiful and special place. Unfortunately many parts of the area are really polluted these days. Garbage everywhere! It makes me feel like crying sometimes to see the beautiful valleys full with rubbish.

Because not many people from Ortahisar walk through the valleys, they don't even now it's so dirty everywhere. And I have to say that it also seems that many people don't really care about it.

Shortly I think that you can say that the pollution in and around Ortahisar is caused by 4 main factors. I will describe them below:

-open garbage bins/not enough garbage bins

In Ortahisar the people can throw their rubbish in the bins provided by the municipality and located on different places in different streets. The bins are emptied nearly every day, but when the roads are in a bad condition because of the weather or during holidays it will take sometimes a couple of days before the bins are emptied. Because the garbage bins are not more than open barrels, it's clear what happens when they are full; the wind blows things away, chickens, dogs and cats feast around them and in the end the rubbish is lying everywhere. Even when the municipality comes every day to empty them, there are still problems because there are just not enough garbage bins. Too many people have to share them.



Solution: putting more bins in the streets, and even better: closed ones, will solve this problem

-lemon depots

Ortahisar is well known for the natural cold-storage rooms in and around the village. Lemons, oranges and grapefruit grown in the regions of Adana en Mersin are stored there. About two/three times a year the storages get cleaned up and all the rotten fruit is thrown out in the valleys. In earlier days it was just the fruit and some paper and the local people collected it for winter time to use it as fuel for their stoves. Nowadays it's not only fruit and paper but it also contains lots of plastic. But plastic or not, the old ways are still used and everything is thrown in the valleys.



Solution: give the depot owners a penalty if they throw the plastic outside and also encourage them to separate the plastic from the fruit.

-mentality of the villagers

Wherever you walk in the valleys or in some parts of the village itself, you will come up to illegal dumped garbage. Some people just find the garbage bins too far away and they just throw the rubbish over their wall into the valley. Or when they have lots of rubbish they put it in a tractor and dump it illegally somewhere.



Possible solutions:

- the municipality has to provide more rubbish bins
- the municipality has to give the people who dump rubbish a penalty
- the municipality has to start an awareness campaign together with the schools
- the municipality has to make it free of costs to bring rubbish to the official rubbish-dump

-attitude of the municipality

The last 2 years there are quite a lot of people in Ortahisar restoring their houses. A good thing of course, but restoration means also a lot of construction waste. When asking the municipality/Zabita (police) where to put this waste they will tell the people to dump it on certain spots in certain valleys. In this way there are filling up some parts of the valleys. If it were only stones that they were dumping it shouldn't be too bad, but it's all kind of waste: stones, concrete, plastic, metal etc. It's really ruining the valleys and after heavily rainfall, the water takes this waste further up in the valleys.



Possible solution: the municipality also has to get aware of the consequences of this behavior for the environment.